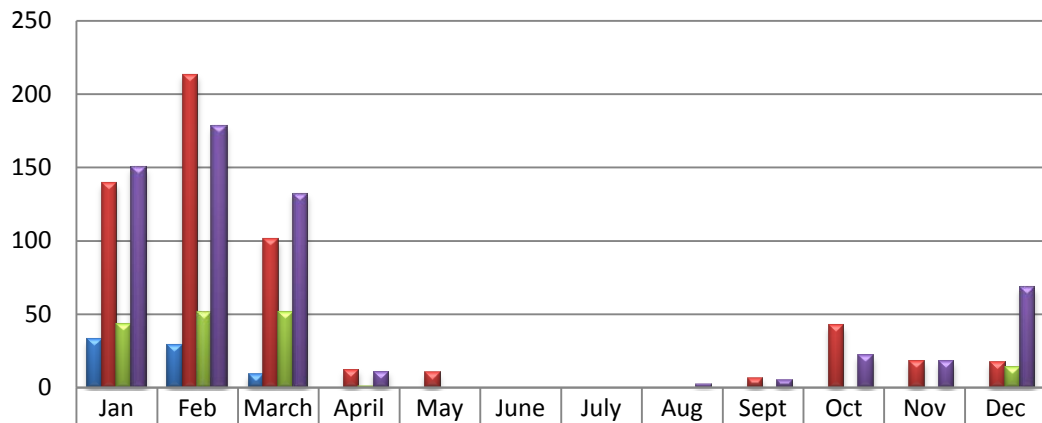


Williams County Health District



Positive and Negative Tests for Influenza 2011 and 2013

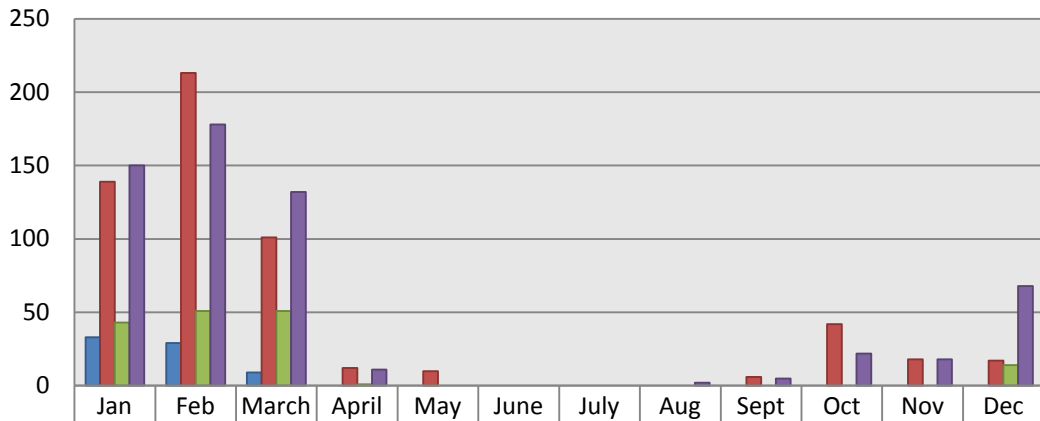


| | Jan | Feb | March | April | May | June | July | Aug | Sept | Oct | Nov | Dec |
|----------------|-----|-----|-------|-------|-----|------|------|-----|------|-----|-----|-----|
| 2011 Positives | 33 | 29 | 9 | 0 | 0 | 0 | 0 | 0 | 0 | 0 | 0 | 0 |
| 2011 Negatives | 139 | 213 | 101 | 12 | 10 | 0 | 0 | 0 | 6 | 42 | 18 | 17 |
| 2013 Positives | 43 | 51 | 51 | 1 | 0 | 0 | 0 | 0 | 0 | 0 | 0 | 14 |
| 2013 Negatives | 150 | 178 | 132 | 11 | 0 | 0 | 0 | 2 | 5 | 22 | 18 | 68 |

Williams County Health District

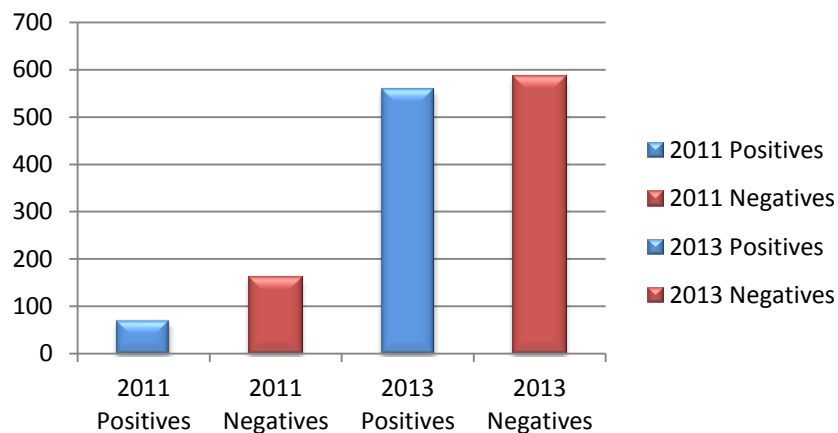


Positive and Negative Tests for Influenza 2011 and 2013



| | | | | | | | | | | | | |
|----------------|-----|-----|-----|----|----|---|---|---|---|----|----|----|
| 2011 Positives | 33 | 29 | 9 | 0 | 0 | 0 | 0 | 0 | 0 | 0 | 0 | 0 |
| 2011 Negatives | 139 | 213 | 101 | 12 | 10 | 0 | 0 | 0 | 6 | 42 | 18 | 17 |
| 2013 Positives | 43 | 51 | 51 | 1 | 0 | 0 | 0 | 0 | 0 | 0 | 0 | 14 |
| 2013 Negatives | 150 | 178 | 132 | 11 | 0 | 0 | 0 | 2 | 5 | 22 | 18 | 68 |

Positive and Negative Tests for Influenza 2011 and 2013



Williams County Health District



Positive and Negative Tests for Influenza 2011 and 2013

■ 2011 Positives ■ 2011 Negatives ■ 2013 Positives ■ 2013 Negatives

